

Hayabusa Renderer 1.0 Trouble shooting

1)After installation of Hayabusa, Hayabusa icon does not appear on Rhino menu.

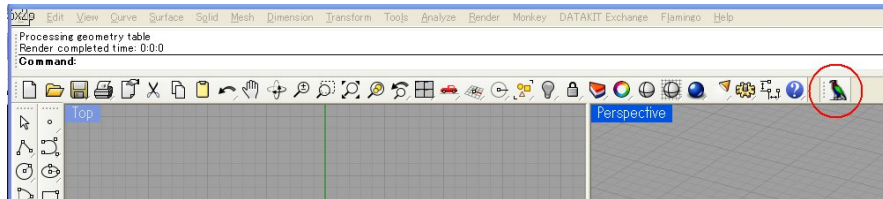


Fig-01

This problem happens when “Export plug-in” to Hayabusa is not located at collect folder and is not loaded by Rhinoceros.

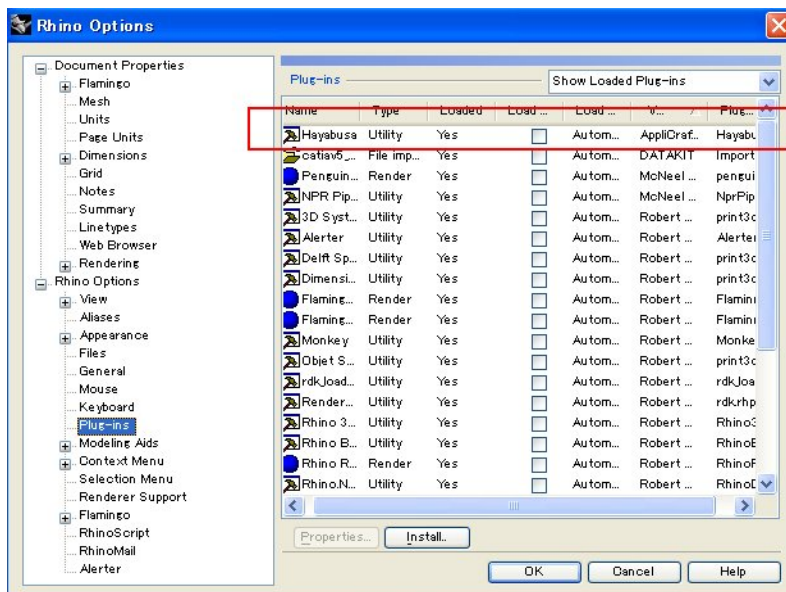


Fig-02

After successfully installed Hayabusa Renderer “Hayabusa” folder is created under the “...Rhinoceros 4.0Plug-ins” folder.

- Hayabusa.rhp;
- Hayabusa.tb;
- Hayabusa.tb.bak;

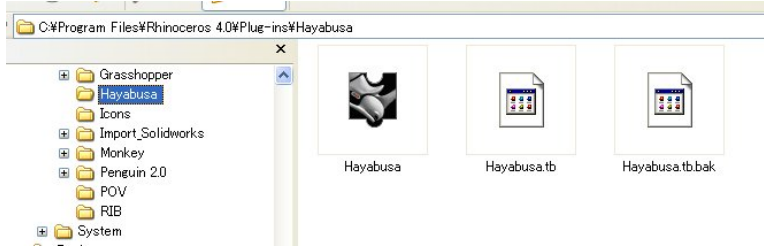


Fig-03

If you will not find those files, you can manually create “Hayabusa” folder and duplicate “Hayabusa.rhp” and “Hayabusa.tb”.

Note; “Hayabusa.tb.bak” will be created after loaded “Hayabusa.rhp”.

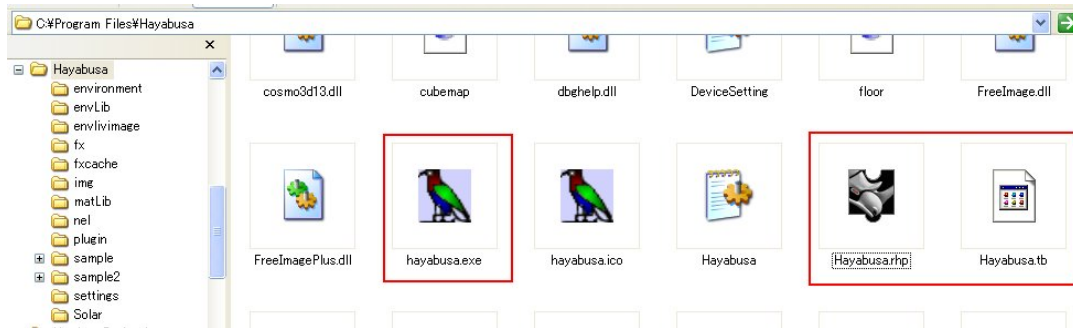


Fig-04

After duplicate those two files, load plug-in and at “Rhino Option dialog” and open “Hayabusa.tb” at “tool bar menu”.

Please refer Rhinoceros Help for this operation.

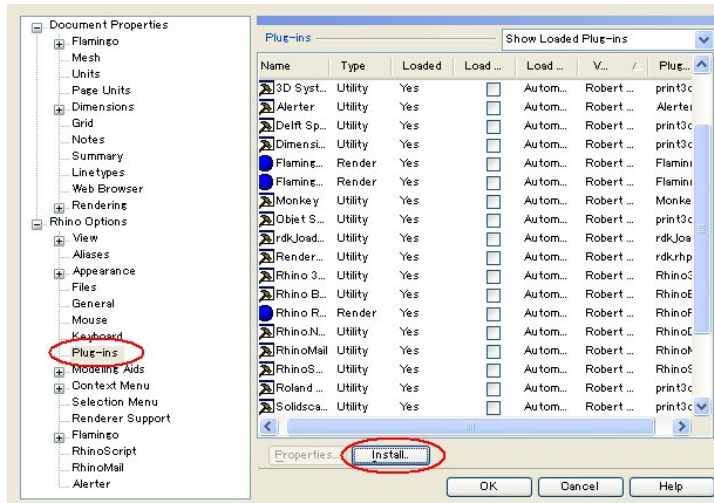


Fig-05

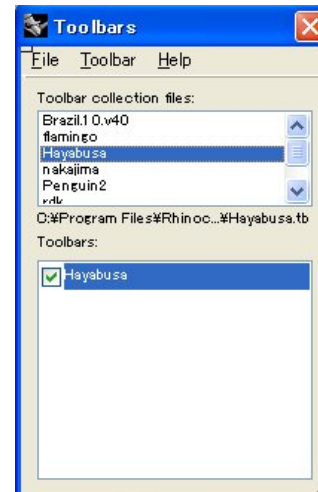


Fig-06

2)When click Hayabusa icon with left mouse button, Hayabusa is not launched.

This case happens when “hayabusa.exe” is not kicked from “Hayabusa.rhp”.

Open “Hayabusa export option dialog” with right click Hayabusa icon, and check path of “Hayabusa.exe” specified correctly.

Default path to” hayabus.exe” is “ C:¥Program Files¥Hayabusa¥hayabusa.exe”



Fig-07